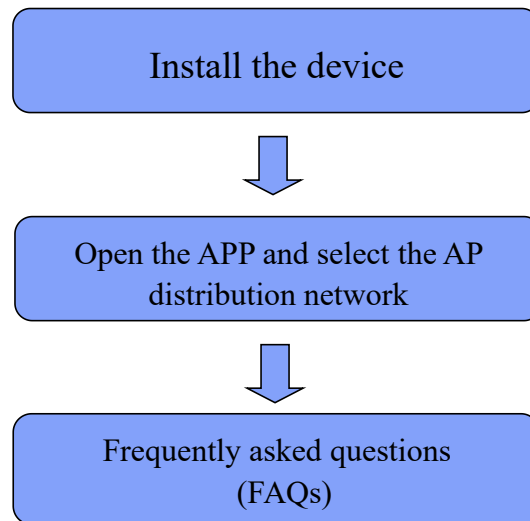




# **Instruction Manual**

## Start using



## App Installation on smart phones

1、 Download and install VI365 in the Apple Store for the IOS system and GooglePlay for the Android system. For your convenience, please scan the QR code below to download and install VI365. If your device can't connect to GooglePlay, please scan the APK QR code below to download and install VI365.



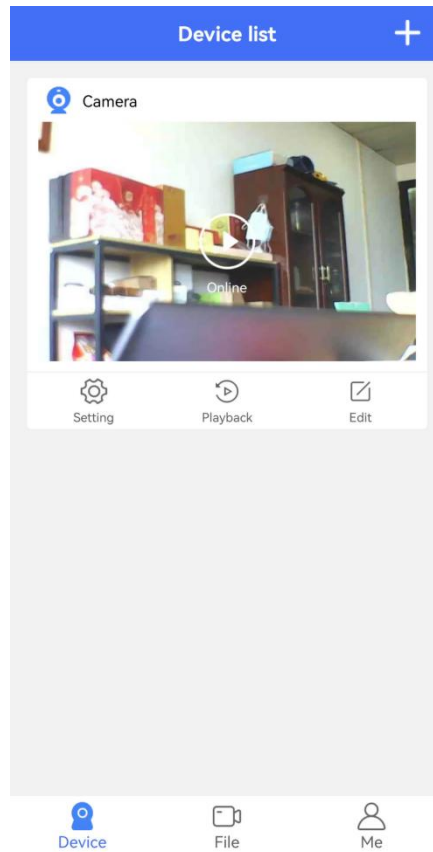
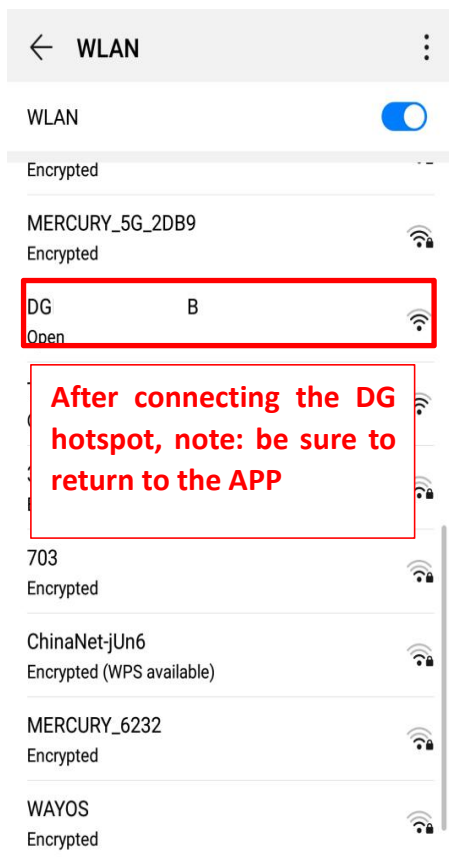
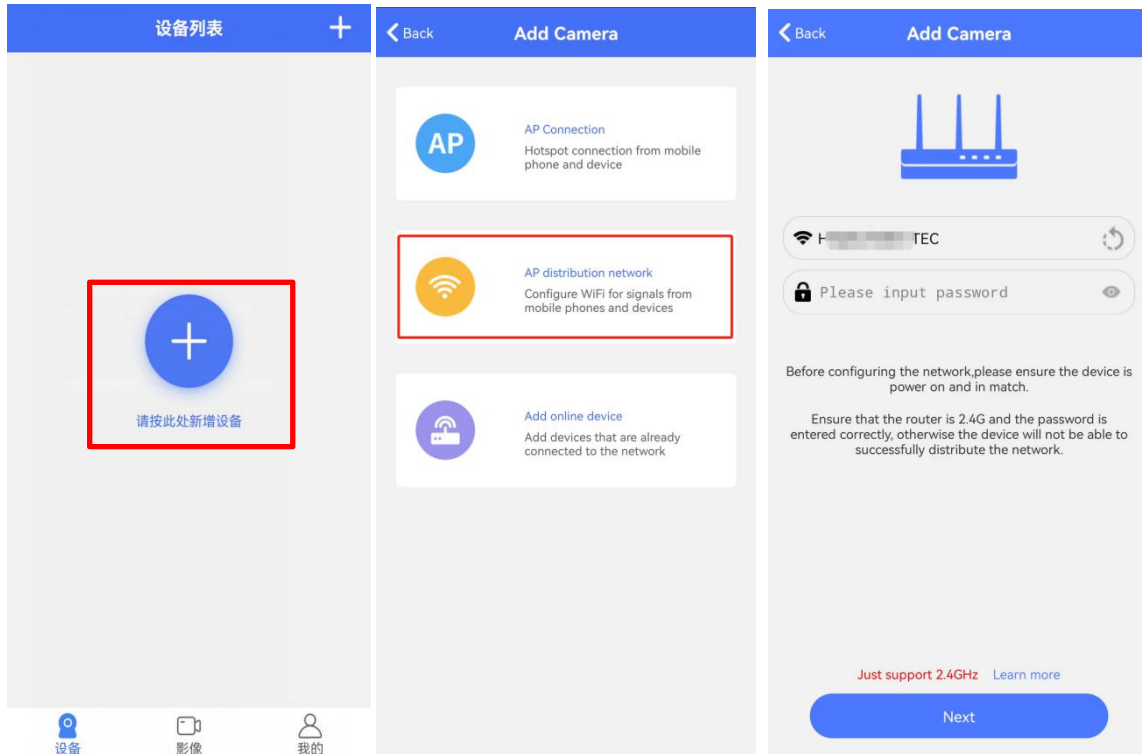
VI365

Android >

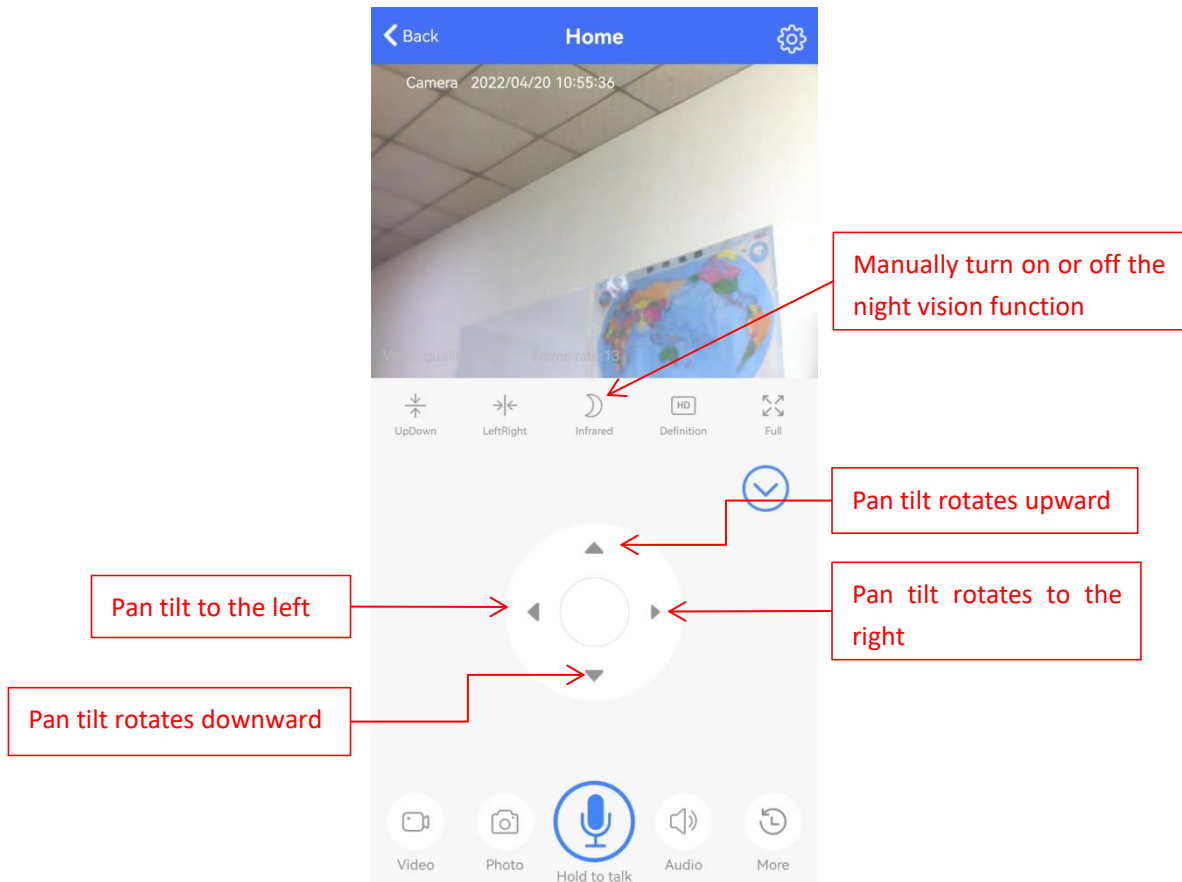
IOS AppStore >

Android GooglePlay >

2、Click "+" to configure a new camera and connect it to WiFi. **Note: When using the camera for the first time, please connect the smart phone to the 2.4 G WiFi router first. Then configure the camera and connect it to WiFi according to the following steps.**



## Video interface function indication



## FAQs

Q1: Why can't I search and detect cameras/configure networks with the APP?

A: Please confirm that your device is connected normally and check whether the APP permission is restricted.

Q2: Why does the camera always require the username and the password, or prompt an incorrect user?

A: The default password for the camera is 6666. If you forget the username or password, you can restore the camera to the factory settings, thus obtaining the default username and password.

Q3: How can I restore my camera to the factory settings?

A: Please press the reset button of the camera for about 5 seconds until the camera restarts.

Q4: Why is the image blurred?

A: Remove the protective film of the lens. If it is still blurred, please rotate the lens of the camera and focus it. After that, you can get a clear image.