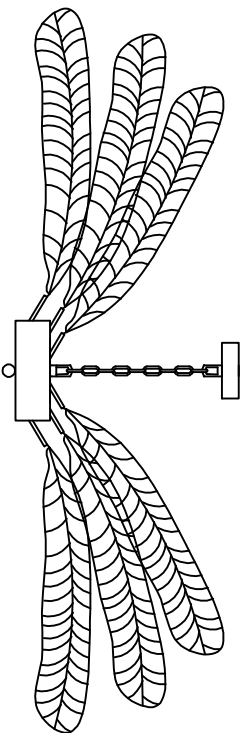


instructions

pay attention to:

- 1.Before installation, please check if the parts are complete and the lampwire is intact.
- 2.Cut off the main wire before installation, and then carry on the connection
- 3.The installation and maintenance must be made by professional technology.
- 4.First install the lamp body, and then install the power supply.

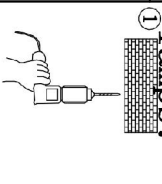


When maintaining lamps and lanterns, be sure to cut off the power supply and prevent electric shock

Pay attention to:
 1.Thank you for buying the products of our company. In order to use this product efficiently and safely, please check and clean the lamps regularly,check to ensure the firmness of the fittings,the embedded parts and the load-bearing hooks in the smolbox. The chain, prevent the aging and undetected, cause the accidents'.
 2.Clean lamps and lanterns. Please do not turn the body of the lamp when the crystal is in the way, so as to prevent the lamp body from loosening from the external screw teeth, causing unsafe accidents.

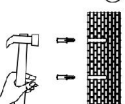
Installation method of suction ceiling

1.lamps:



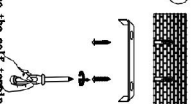
In the place to be installed, drill holes according to the hole position of the hanging plate.

2



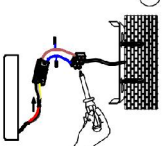
Use an ocean hammer to jump the small rubber plug into the drill hole and space.

3



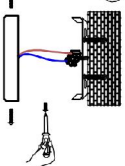
Use the self-supply screws to fix the hanging plates in the expansion screws of the ceiling and lock the hanging plates with screws.

4



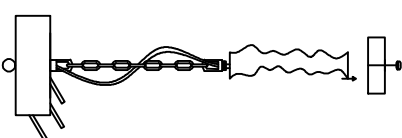
Connect the power cord on the lamplate to the wiring in the ceiling. Be reserved for the ceiling, then lock it with a connector.

5

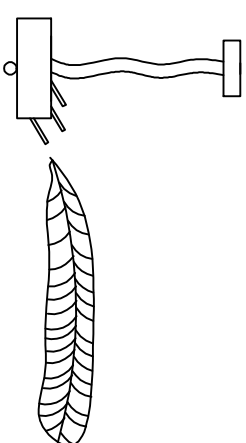


Locking the top plate with a screw

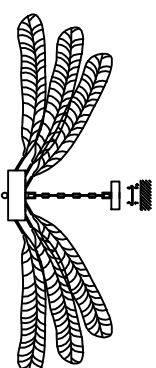
first:



Second:



Third:



Fourth:

